

EMS LHP: Episode X COVID Comes to The Nursing Home. Show Notes

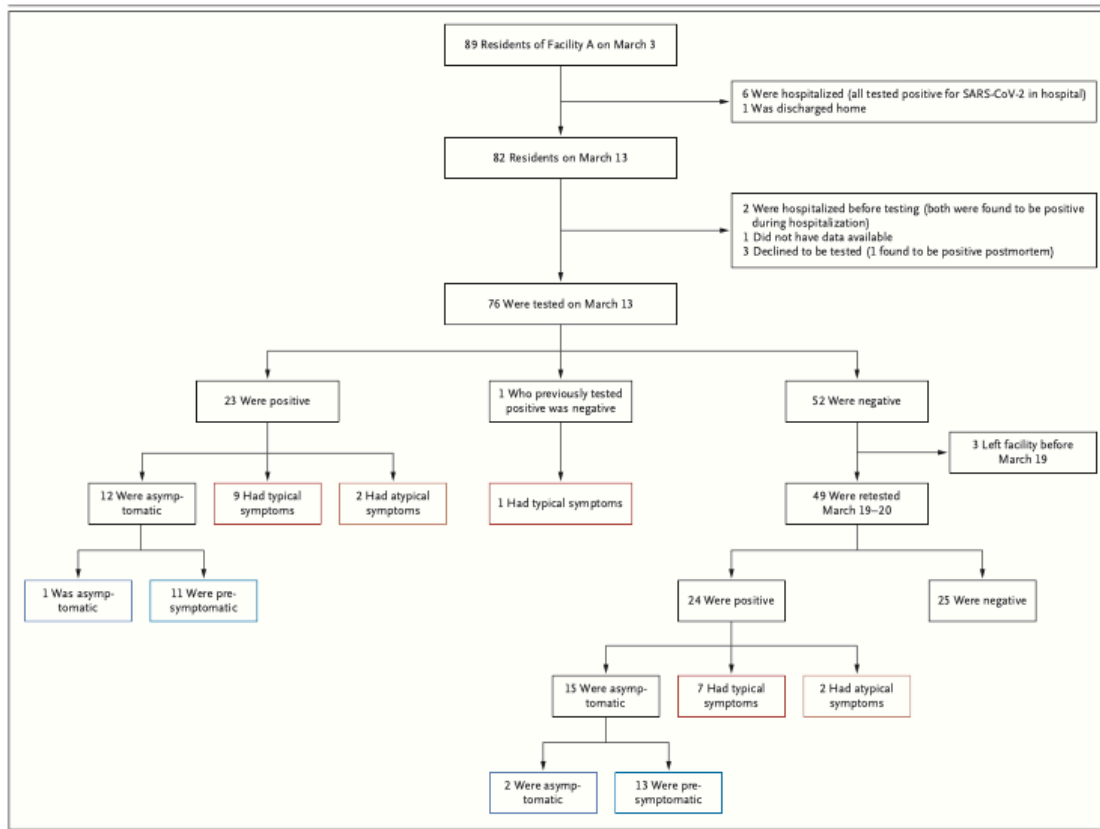
Citation:

Arons MM, Hatfield KM, Reddy SC et al. Presymptomatic SARS-CoV-2 Infections and Transmission in a Skilled Nursing Facility. *New England Journal of Medicine*. 2020;

Links for Dr. Jason Pickett:

<https://atcomd.wordpress.com/category/podcasts/>

Figure 1:



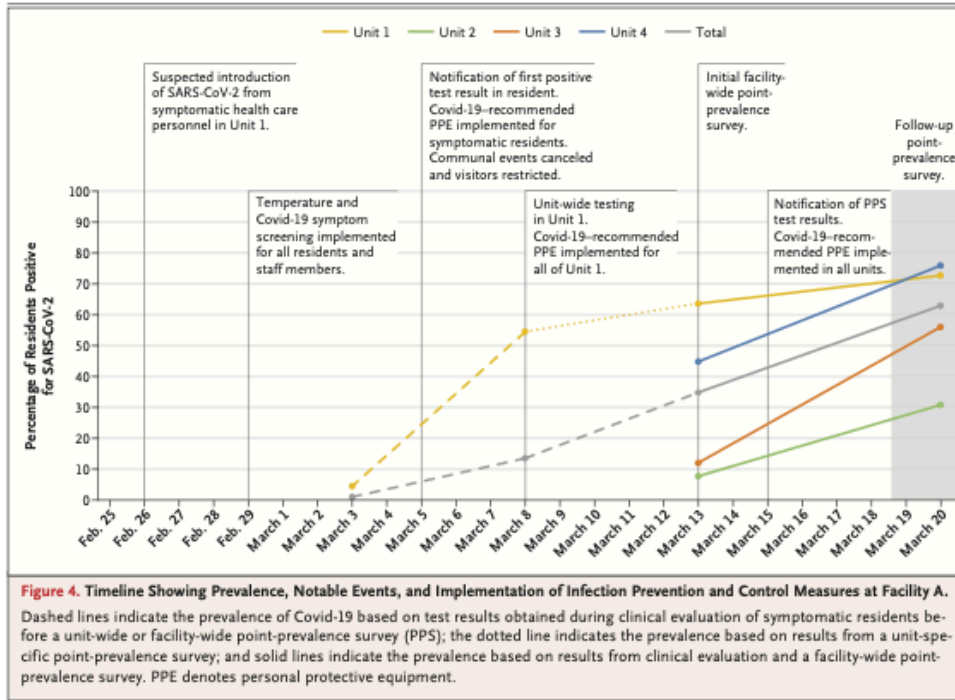


Figure 2

Characteristics	SARS-CoV-2 Test Results	
	Positive† (N=48)	Negative‡ (N=28)
Overall		
Positive result during initial facility-wide cohort testing — no. (%)	23 (48)	—
Mean age (±SD) — yr	78.6±9.5	73.8±11.5
Length of stay at Facility A <90 days before testing — no. (%)	23 (48)	14 (50)
Coexisting conditions — no. (%)		
Any coexisting condition	47 (98)	28 (100)
Chronic lung disease	18 (38)	8 (29)
Diabetes	18 (38)	11 (39)
Cardiovascular disease	39 (81)	17 (61)
Cerebrovascular accident	19 (40)	8 (29)
Renal disease	18 (38)	9 (32)
Received hemodialysis	3 (6)	1 (4)
Cognitive impairment	28 (58)	13 (46)
Obesity	11 (23)	6 (21)
Symptoms during the past 14 days — no. (%)		
In symptomatic residents§	21 (44)	11 (39)
At least one typical Covid-19 symptom	17 (35)	8 (29)
Only atypical Covid-19 symptoms	4 (8)	3 (11)
In asymptomatic residents	27 (56)	18 (64)
No symptoms	15 (31)	14 (50)
Only stable, chronic symptoms	12 (25)	3 (11)

* Results include all residents who were present in the facility on March 13 and assented to screening. Facility-wide cohort symptom screens and point-prevalence surveys were performed on March 13 and March 19–20, 2020.

† Residents categorized as positive include those with at least one positive test from facility-wide point-prevalence surveys on March 13 or March 19–20 and one resident who tested negative on March 13 but tested positive before March 13.

‡ Residents categorized as negative include 3 residents who had only one negative swab on March 13 and were not re-tested.

§ Typical symptoms include fever, cough, and shortness of breath. Atypical symptoms include chills, malaise, sore throat, increased confusion, rhinorrhea or nasal congestion, myalgia, dizziness, headache, nausea, and diarrhea.

Arons MM, Hatfield KM, Reddy SC et al. Presymptomatic SARS-CoV-2 Infections and Transmission in a Skilled Nursing Facility. *New England Journal of Medicine*. 2020;